

# Oakmont Firehouse

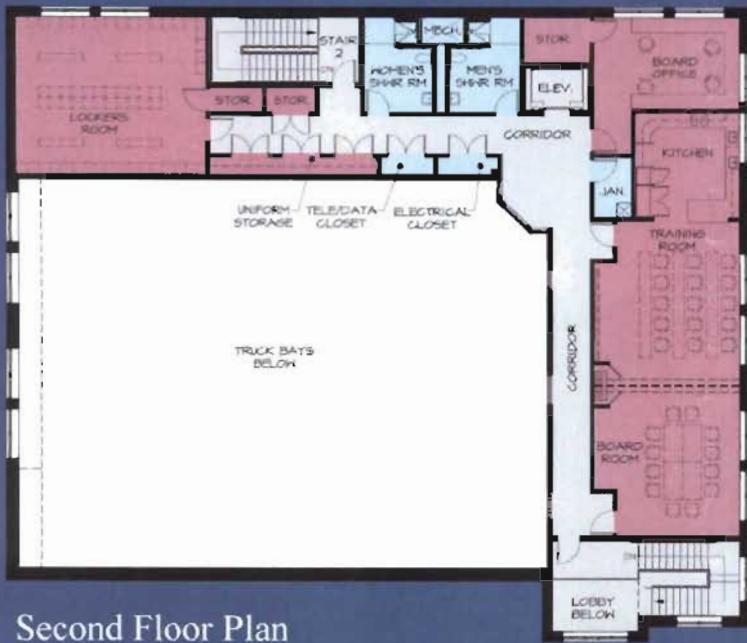


- 12,100 Total Square Feet
- Proper Equipment Storage
- Functional Truck Bays
- Training Room
- Officers and Board Office Space
- Design Sensitive to Neighborhood
- Display Civic Spirit
- Organized for Quick Emergency Response
- Lower Operating Cost
  - Extensive Daylighting
  - Durable, Maintenance Free Construction
  - Modern Mechanical and Electrical Equipment



Oakmont Fire Company  
Havertown, PA

**CASACCIO**  
**ARCHITECTS**  
*Mission Driven Design*  
© CASACCIO ARCHITECTS LLC 2009



Second Floor Plan



First Floor Plan

The members of the Oakmont Firehouse have been working to update the firehouse facility for almost ten years. The needs were numerous as the existing facility truck bays were not large enough to house today's modern equipment. The building was prone to flooding and did not provide space for training, offices, equipment storage and specialty material handling. From these findings, the Oakmont Fire Company began their relationship with Casaccio Architects from Havertown. Working with the members of the fire company, Casaccio Architects developed a feasibility study that surveyed the conditions of the existing firehouse and explored expansion options. From this study, the fire company members chose to develop a plan to construct a new firehouse as well as continuing to work with Casaccio Architects to further execute their plans.

The new 12,100 square foot firehouse for the Oakmont Fire Company had to solve several problems that the Company leaders had outlined during preliminary design meetings. Because the project sits amongst a residential neighborhood, it needed to be sensitive to the residential scale while also establishing a civic presence. The design of the building envelope provides a timeless aesthetic while incorporating contemporary detailing. The solution is cost effective, yet provides durable masonry construction which will assure that this facility will be serving the future generations of the community.

Due to a tight project budget, the spatial planning is flexible as well as functional. Special considerations were given that allows the fire company to respond to alarms in a quick, safe and efficient manner. The floor plan supports this by placing Leadership Offices, Crew Room, Training Room and additional support spaces all within visual access of the four Engine Bays. Additionally, the organization of the plan reflects a careful understanding of functions and activities that the department plans to perform.



Oakmont Fire Company

2009